

Manual Adjustments Redesign

Brian Davis

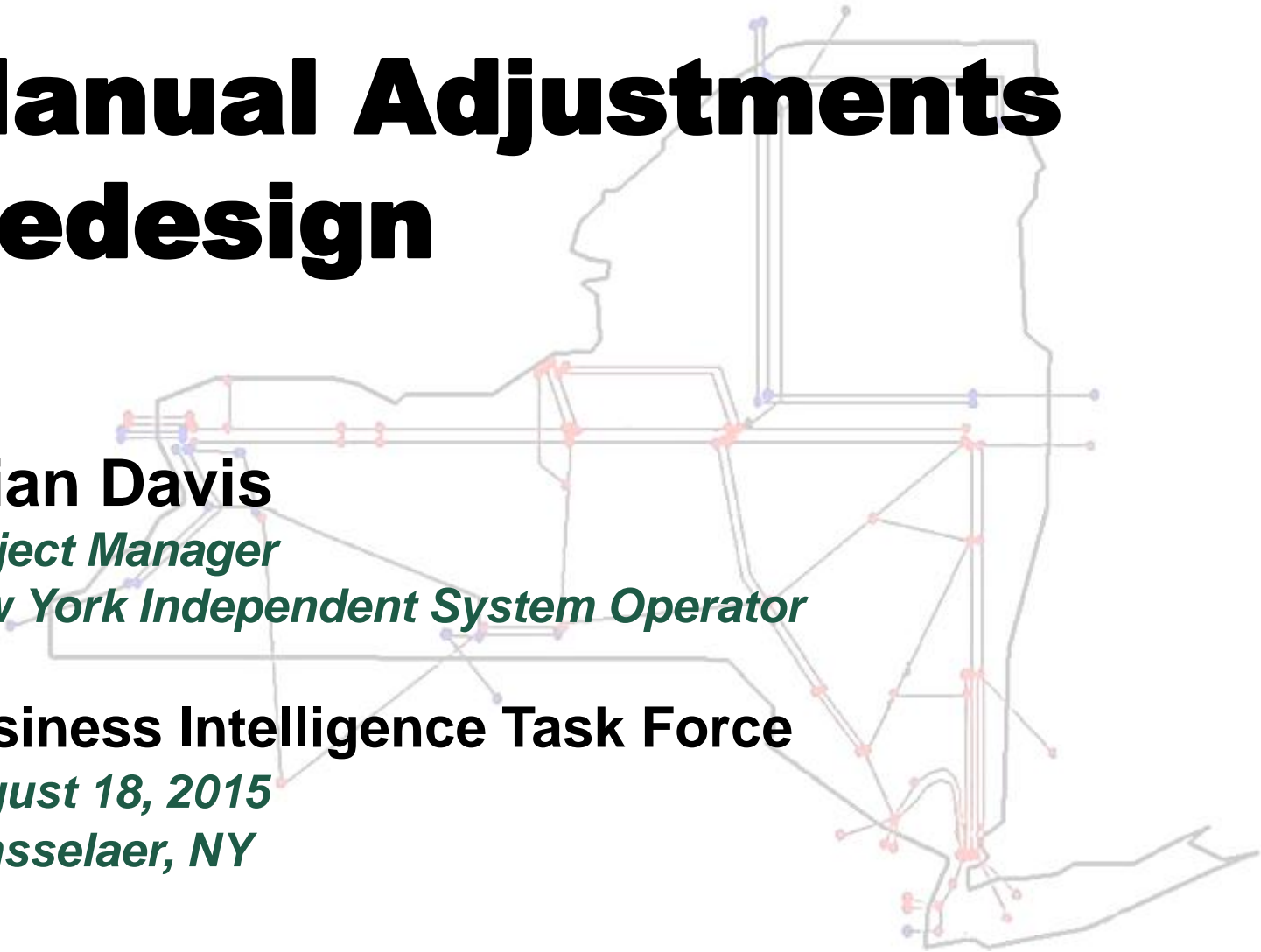
Project Manager

New York Independent System Operator

Business Intelligence Task Force

August 18, 2015

Rensselaer, NY



Manual Adjustments Redesign

◆ Project Overview:

- Provide Customer Settlements with new functionality to automate existing manual processes and workflow.
- Expand the automation of the existing load ratio share calculation from the current monthly and daily levels down to an hourly level.
- New functionality and changes are set to deploy in October 2015.

DSS Changes:

- ◆ Updates to the Settlement Details-Invoice Support Report
- ◆ Customer Settlement Invoice Support Universe
- ◆ Backfill changes to existing report and Customer Settlements Universe

Settlement Details-Invoice Support Report and the Customer Settlements Invoice Support Universe - Updates

- ◆ The column header for 'Effective Date' will change to 'Initial Banking Date' for the Settlement Details-Invoice Support Report.
- ◆ The 'Reversal Month' column will be removed from the report. *Note: the data will continue to be populated in the database and available in the DSS Universe.*
- ◆ The 'Load Ratio Share Date' column will be removed from the report and the DSS Universe.
- ◆ New columns will be added for 'Allocation Start Time' and 'Allocation End Time' to the report and the DSS Universe.

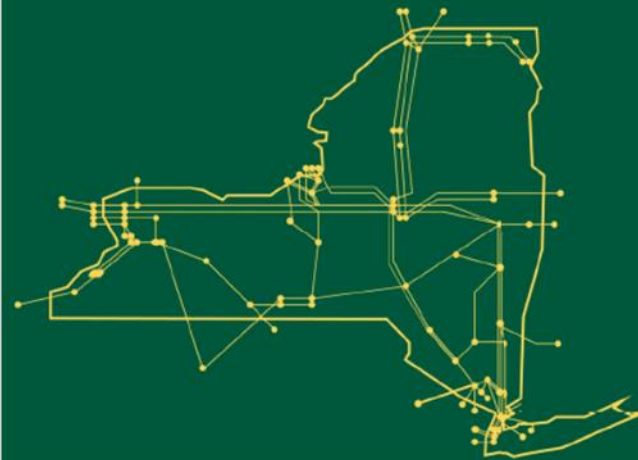
Settlement Details-Invoice Support Report and the Customer Settlements Invoice Support Universe – Updates (cont.)

- ◆ The column header for ‘Mo Manual Adj Description’ will change to ‘Mo Manual Adjustment Additional Detail’ for the Settlement Details-Invoice Support Report.
- ◆ A new column will be added for ‘Total Allocation Amount’ to the report and the DSS Universe.

Backfill Changes for Existing Report/Universe Data Fields

- ◆ ‘Allocation Start Time’ – if Load Ratio Share Date is populated, the Allocation Start Time field will be populated with the day beginning.
- ◆ ‘Allocation Start Time’ – if Load Ratio Share Date is not populated, the Allocation Start Time field will be populated with the month beginning.
- ◆ ‘Allocation End Time’ – if Load Ratio Share Date is populated, the Allocation End Time field will be populated with the day ending.
- ◆ ‘Allocation End Time’ – if Load Ratio Share Date is not populated, the Allocation End Time field will be populated with the month ending.

The New York Independent System Operator (NYISO) is a not-for-profit corporation responsible for operating the state's bulk electricity grid, administering New York's competitive wholesale electricity markets, conducting comprehensive long-term planning for the state's electric power system, and advancing the technological infrastructure of the electric system serving the Empire State.



www.nyiso.com